



# *Angeles NF Collaborative Transit to Trails (T2T)*

## Managing by Network Case Study

Ricardo Lopez,  
Forest Engineer  
[rlopez@fs.fed.us](mailto:rlopez@fs.fed.us)



*Angeles National Forest  
San Gabriel Mountains  
National Monument*



# *Overview*

Angeles NF Collaborative Transit to Trails

1. Urban Forest Interface in Los Angeles County
2. Transit to Trails projects into Forest
3. Transit into the Future





# Angeles National Forest San Gabriel Mountains National Monument

## Angeles NF & Congressional Districts at a Glance





*Angeles National Forest  
San Gabriel Mountains National  
Monument*

# *Los Angeles' Urban Forest*







# Nature's Benefits

Angeles National Forest

➤ **Over 2.8 million visitors** recreate on the ANF annually

- 1.6 million people to hike
- About 270,000 people downhill ski
- Over 116,000 people camp and backpack



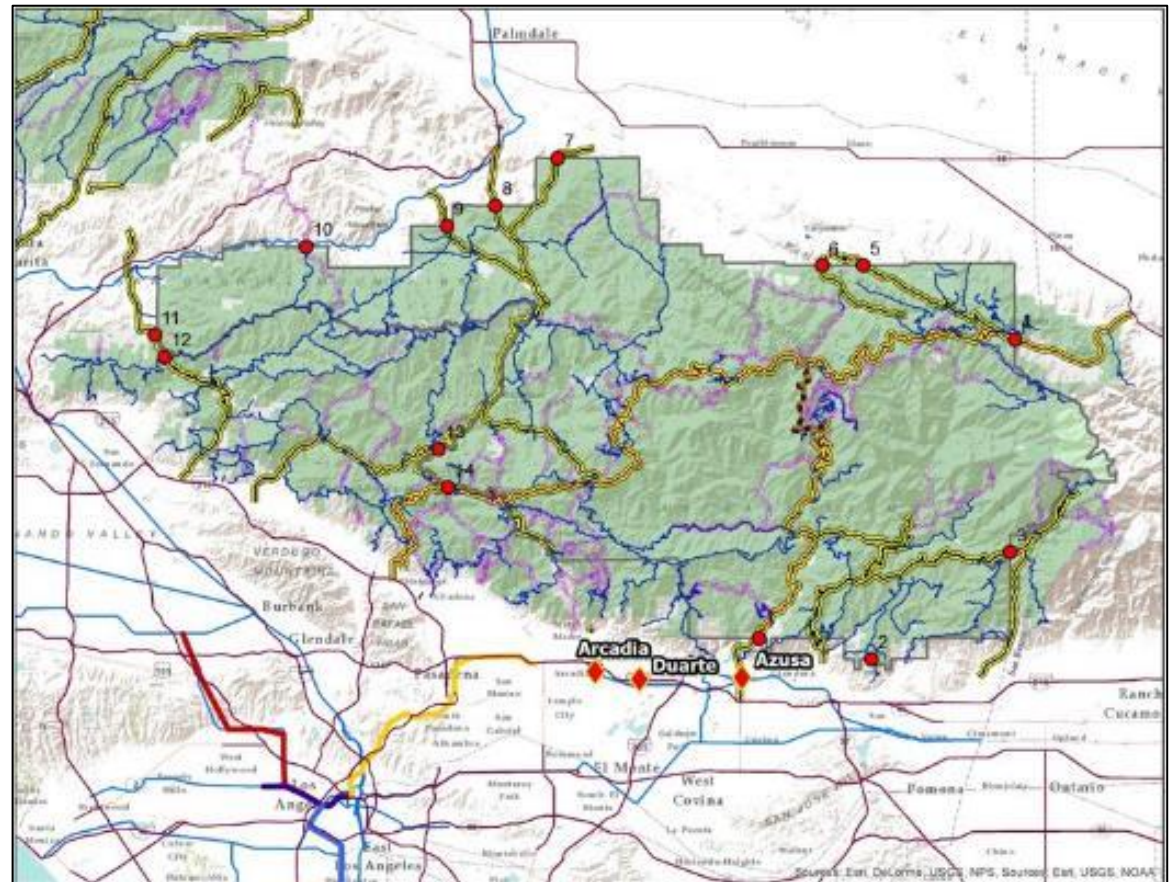
- **ANF contributes to local economies** via work and opportunities on the Forest
- **~\$114 million in labor income** for wage earners and local businesses from ANF each year
- **~1,920 jobs** from ANF projects and employment
- **~\$61 million spent locally** by recreation visitors





# *Transportation System*

- System roads
  - County
  - State
- Forest Service System Roads
  - Paved
  - Unpaved
- FS System Trails
  - Motorized
  - Non-Motorized
- SGMNM Access Portals
- Public Transportation
- Highways
- Metro Light Rail







# *San Gabriel Mountains Community Collaborative*

45-member organization representing wide interests

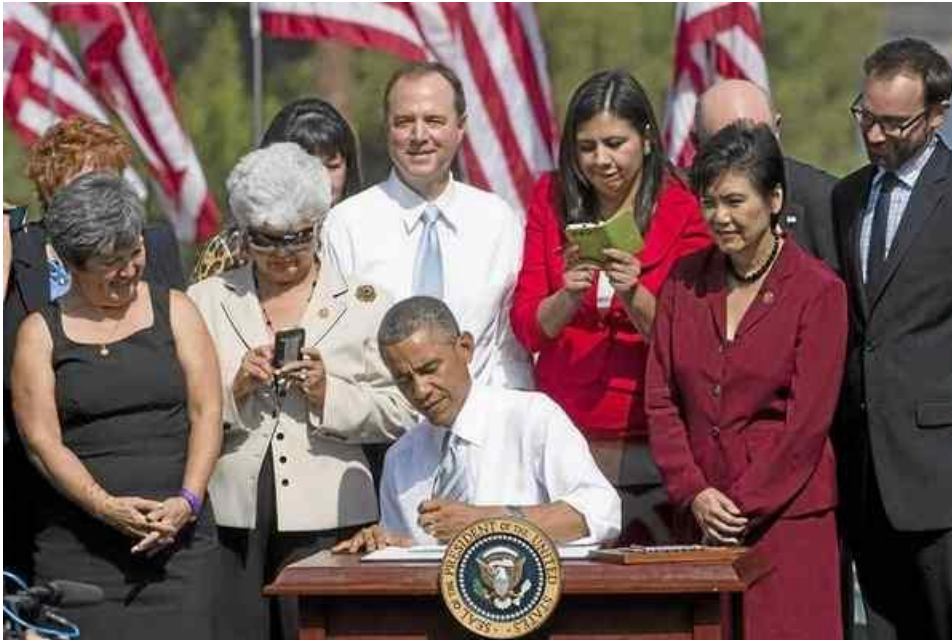
- Comprised of local governments, NGOs, volunteer organizations, private utility companies, DOT agencies and government partners
- Ad hoc committee groups include:
  - Trails and Recreation
  - Volunteer Engagement
  - Conservation Education
  - **Transportation (such as Transit 2 Trails)**





## Angeles National Forest San Gabriel Mountains National Monument

# *But First – How Did We Get Here?*



United States Department of Agriculture



- The San Gabriel Mountains National Monument is the eighth Forest Service national monument. The Antiquities Act of 1906 grants the President or Congress the authority to designate national monuments in order to protect "objects of historic or scientific interest."
- Located primarily in the Angeles National Forest, the monument is 346,177 acres. The forest, including the monument, provides 70 percent of the open space to more than 15 million people living within 90 minutes of the area, and provides a third of Los Angeles' drinking water.
- The mighty San Andreas Fault and other geological forces have shaped these steep and rugged mountains. The highest point in the San Gabriel Mountains is the 10,064-foot Mt. San Antonio, nicknamed Mt. Baldy.
- Deep canyons, many with perennial streams, provide crucial habitat for rare and unique wildlife, including the California condor, spotted owl, bighorn sheep, and 1,000-year-old limber pines.
- The monument is rich with cultural and historic sites. There are more than 600 archeological sites within the monument, including two Native American rock art sites listed on the National Register of Historic Places.
- Science and research have been and continue to be an integral part of the monument. The historic Mt. Wilson Observatory has hosted world-class scientists, including astronomer Edwin Hubble. The San Dimas Experimental Forest provides crucial scientific insights into watersheds and aquatic science.



- The National Monument is the heaviest used area on the Angeles National Forest, which receives more than 4 million visitors per year. This number is expected to increase now that the area has been designated a national monument. Hiking, biking, horseback riding, off-highway vehicle use, fishing, hang-gliding, hunting and picnicking are just a few of the recreational activities on the monument.
- In a region with limited open space, the mountains are the backyard for many highly urban and culturally diverse communities. National monument designation will also vastly enhance recreational access, interpretive and environmental education and bolster already strong partnerships between the Forest Service and neighboring communities.
- The Forest Service mission is to sustain the health, diversity, and productivity of the Nation's forests and grasslands to meet the needs of present and future generations.

For more info go to <http://go.usa.gov/wccH>



Forest  
Service

National  
Headquarters

October 2014

President Obama Designation October 10, 2014

The San Gabriel Mountains National Monument is the eighth Forest Service national monument. The Antiquities Act of 1906 grants the President or Congress the authority to designate national monuments in order to protect "objects of historic or scientific interest."





# Transit 2 Trails – Working Groups







## Angeles National Forest San Gabriel Mountains National Monument

# 2016 Chantry Shuttle Pilot Project



United States Department of Agriculture

## #NextStopOutdoorFun



### Free Trial Shuttle Service Arcadia to Chantry Flat Picnic Area

#### WEEKEND SHUTTLE SCHEDULE

\*September 24 - September 25

October 1 - October 2

\*October 8 - October 9

Shuttle will run between the Arcadia Metro Gold Line Station beginning 7am - the last shuttle will depart Chantry Flat at 4pm

Shuttles will arrive/depart every 30-45 minutes (estimated)

#### \*SPECIAL EVENTS

September 24 - National Public Lands Day - Join us for a day of fun and educational activities. Partners will offer hikes, outdoor cooking demonstrations, and other educational activities!

October 2 - 8 AM - 12:30 PM - The Wilderness Society welcomes the public to join a wellness hike to learn about the connection between nature and mental health.

The USDA Forest Service is an equal opportunity employer, service provider, and lender.



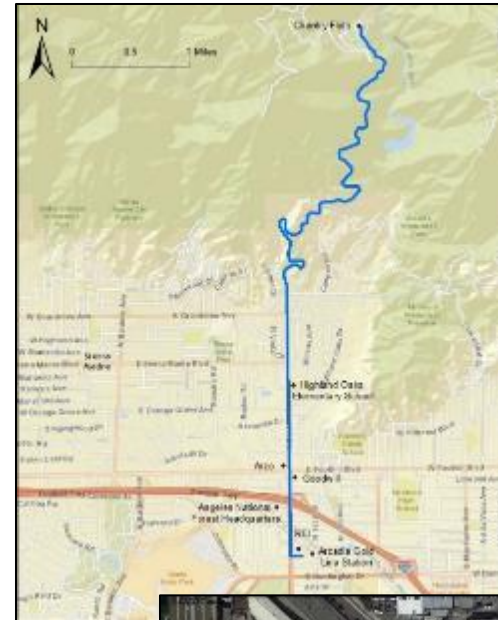
Forest  
Service

Pacific  
Southwest  
Region

Angeles  
National  
Forest

San Gabriel Mountains National Monument

Chantry  
Flat

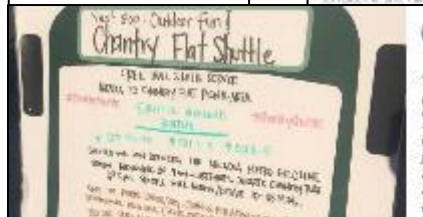
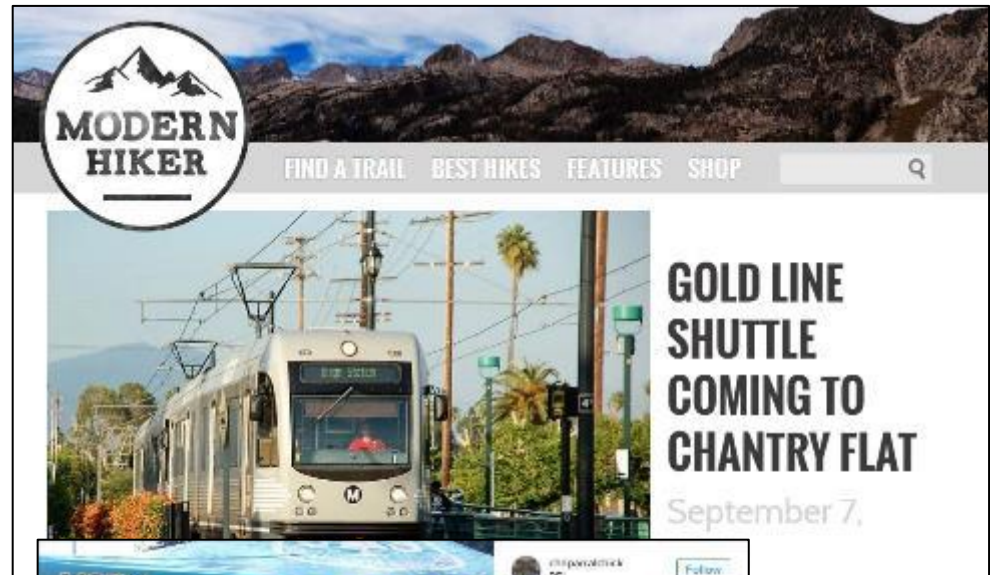






# Angeles National Forest San Gabriel Mountains National Monument

## Outreach & Social Media

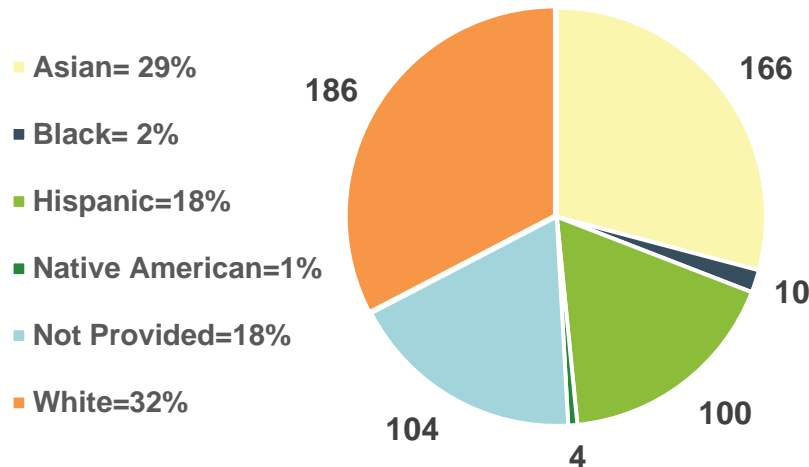




# Angeles National Forest San Gabriel Mountains National Monument

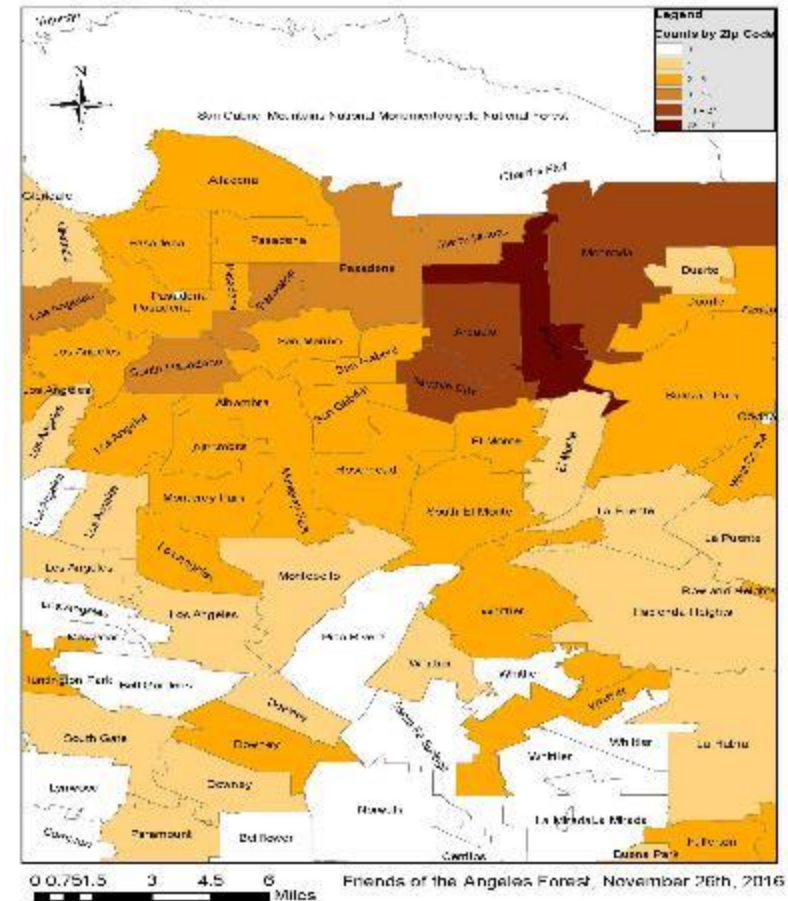
## Total Riders by Ethnicity

Riders by Ethnicity



Forest Service  
Angeles National Forest

Chantry Flat Shuttle Pilot Users By Zip Code







Angeles National Forest  
San Gabriel Mountains National  
Monument

## 2019 All Aboard for Nature on NPLD





*Angeles National Forest  
San Gabriel Mountains National  
Monument*

## *Future T2T Efforts*

- City of Arcadia Shuttle Service
- San Gabriel Mountains Transit Infrastructure Program



# RIDE THE FREE CHANTRY FLAT SHUTTLE!

- Hike to Sturtevant Falls
- Picnic
- Volunteer

## SPECIAL DAY: SATURDAY SEPT. 28

All aboard for Nature! Celebrate National Public Lands Day and enjoy your great outdoors!

The City of Arcadia will provide a free one-day-only public shuttle from the Arcadia Metro Gold Line Station from 8:15 am - 3:00 pm.

Shuttles will drop off/pick up at Chantry Flat picnic area in the Angeles National Forest, and loop every 35-45 minutes.

The last return shuttle will depart Chantry Flat at 4:00 pm.

Limited parking is available at REI Arcadia's lot.

See [www.lanatureforall.org](http://www.lanatureforall.org) for more info on National Public Lands Day activities, including a volunteer work day at Chantry Flat!

PRESENTED BY: 

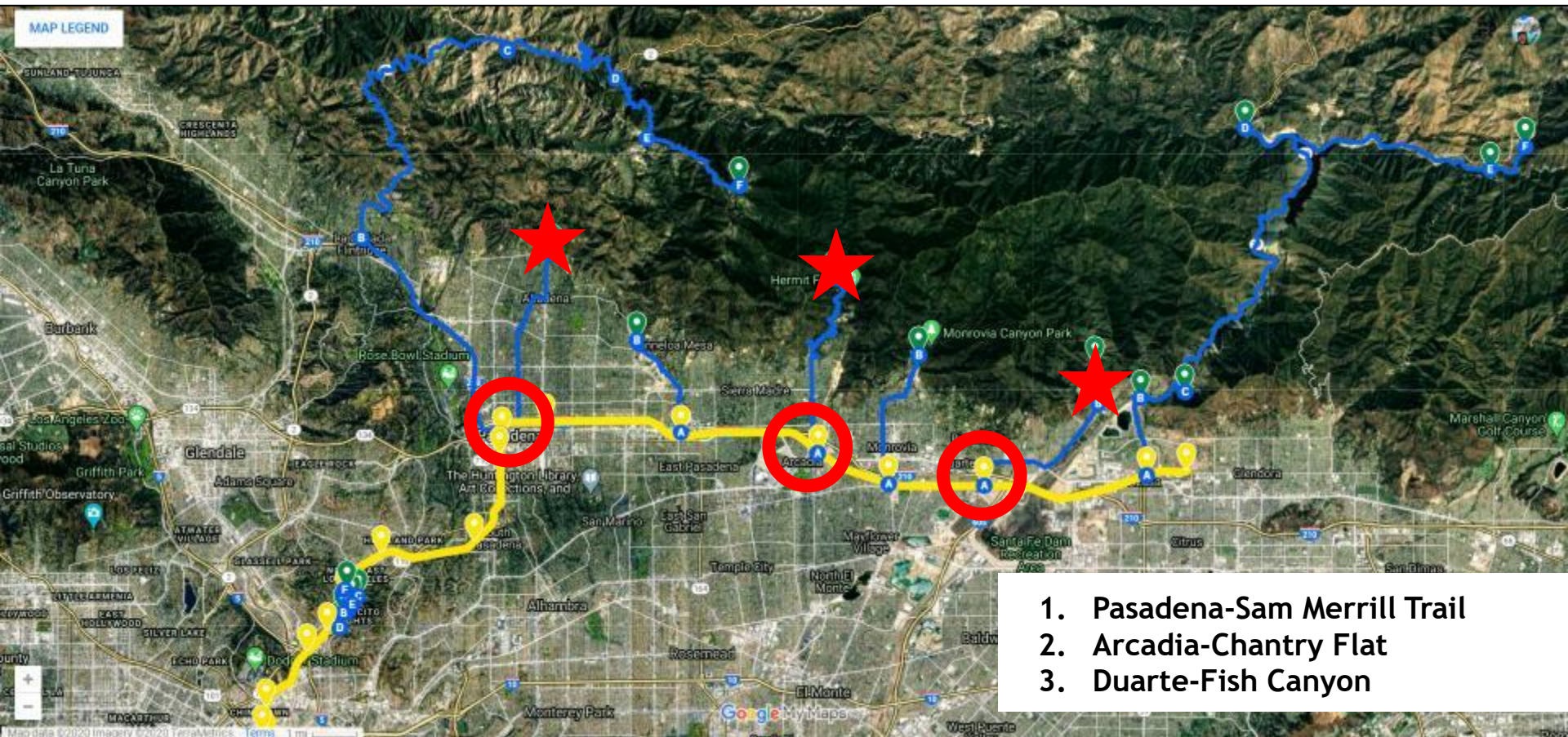
SHUTTLE SPONSOR: 

PROJECT PARTNERS:   





# *Successfully Demonstrated Shuttle Pilots*



1. Pasadena-Sam Merrill Trail
2. Arcadia-Chantry Flat
3. Duarte-Fish Canyon





## Angeles National Forest San Gabriel Mountains National Monument

# Successfully Demonstrated Shuttle Pilots



**Shuttle:** Duarte Fish Canyon  
**Departure:** GL Duarte Station  
**Operator:** City of Duarte

- First new T2Trails service to San Gabriel Mountains
- Apr-May 2016, Saturdays
- 7 am-6 pm. Every 30 mins
- Funding: Measure R local return
- Fire damage closed trail; City to explore significant trail restoration. Will resume after.

**Shuttle:** Pasadena Sam Merrill Trail (Echo Mountain)  
**Departure:** GL Memorial Park Station (Pasadena)  
**Operator:** City of Pasadena

- Echo Mountain & Inspiration Point Trails
- Fall 2018, Frequency: 30 min. Travel time: 23 min
- Partners: 5th District, SoCal Edison, Trust for Public Land, The Wilderness Society.







## *Chantry Flat Pilot Shuttles*



**Shuttle:** Pilot -Chantry Flat Shuttle 1.0

**Departure:** GL Arcadia Station

**Operator:** US Forest Service, (transit contractor)

- Partners: The Wilderness Society, National Forest Foundation, REI
- Date: Sep. 2017, 4 weekends.
- Frequency: 30-45 min.
- Travel time: 25 min, 1-way.

**Shuttle:** Pilot -Chantry Flat Shuttle 2.0

**Departure:** GL Arcadia Station

**Operator:** City of Arcadia, First Transit (contractor)

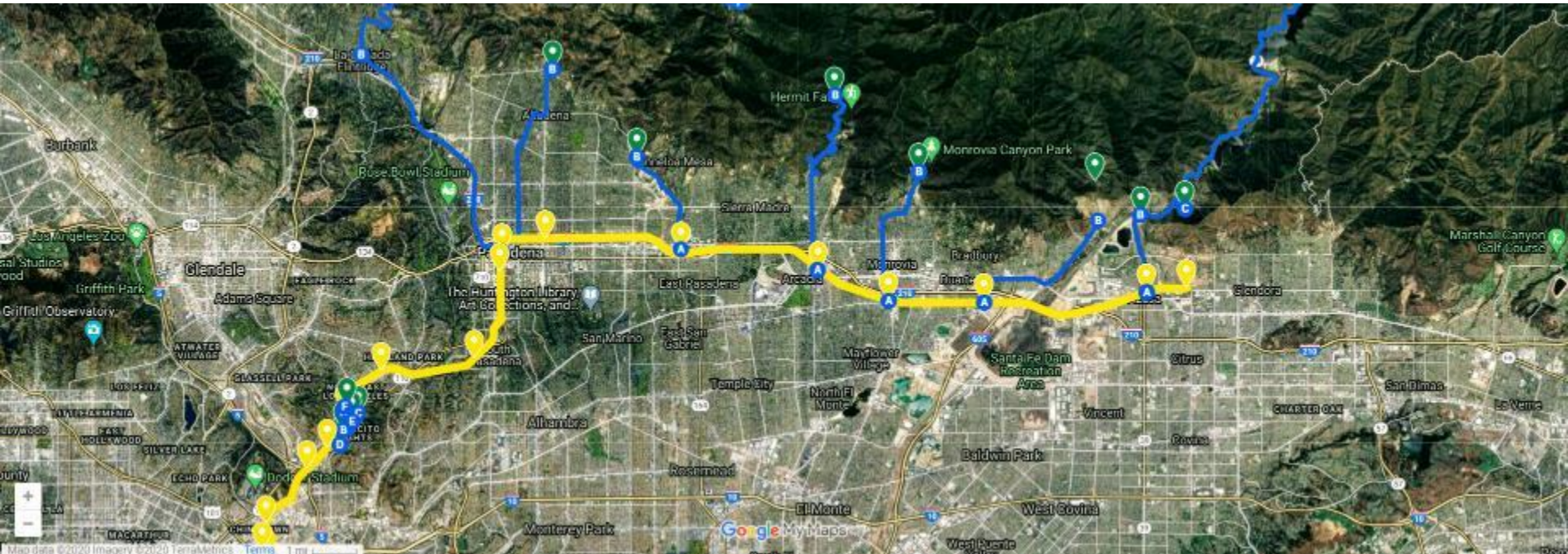
- Partners: Nature for All, US Forest Service, National Forest Foundation, REI
- Date: Sep. 2019, 1 Saturday
- Frequency: 30-45 min. 3 shuttles.
- Travel time: 25 min, 1-way.





Angeles National Forest  
San Gabriel Mountains National  
Monument

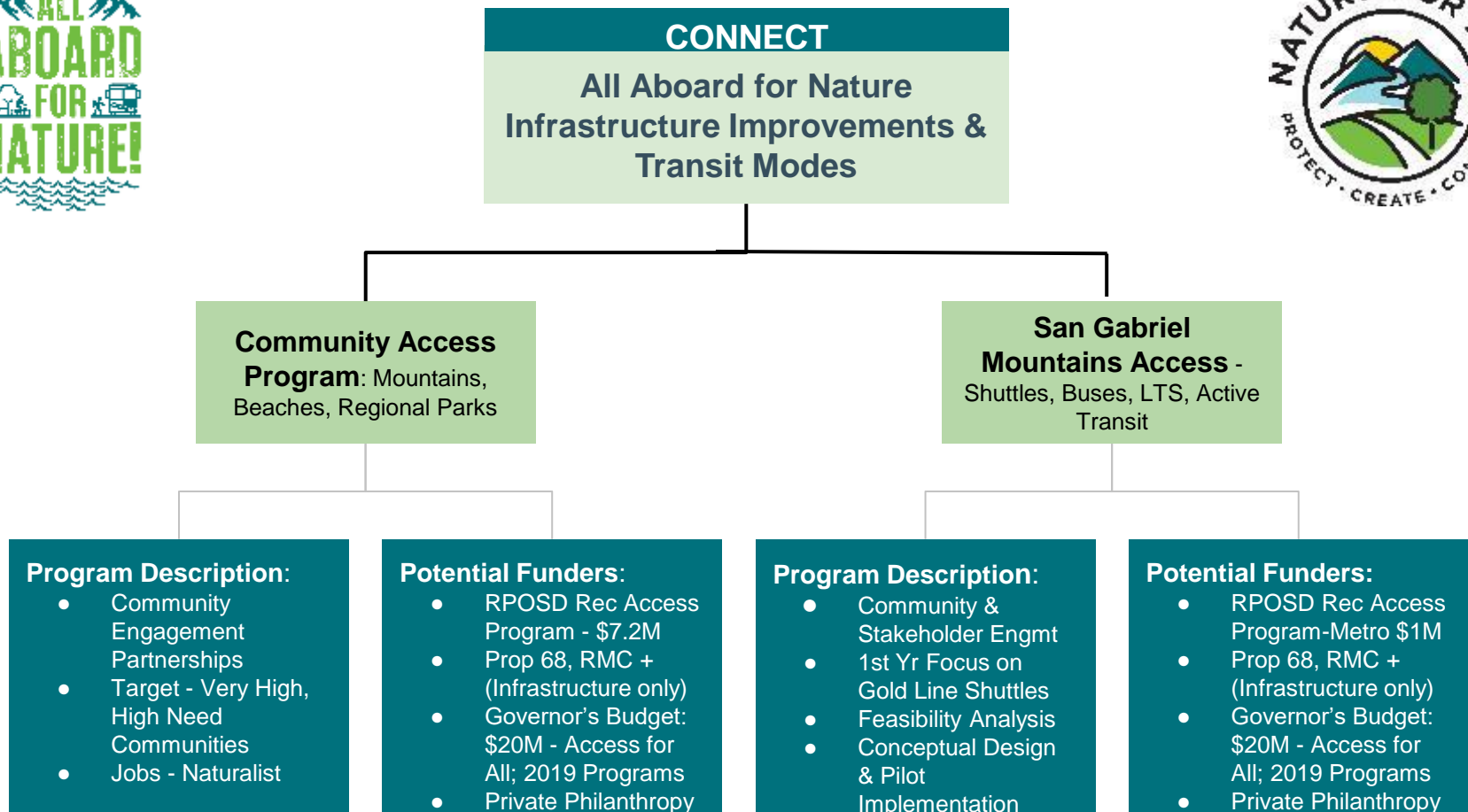
# *San Gabriel Mountains Transit & Infrastructure Program (SGM-TIP)*







# Overview of Nature for All – All Aboard for Nature





## *Access to Parks - COVID era? Needed now more than ever*

### ➤ In LA County:

- Tremendous public demand for the outdoors
- Revealing stark disparities in nature access
- Political will & funding aligning to act
- Desire for multi-benefit, innovative solutions

### ➤ **LA is park-poor:** Half of LA County lives in “park-poor” areas. Negative impacts:

- **Environmental justice:** 82% communities of color
- **Poor public health:** Childhood obesity, diabetes, air pollution, asthma
- **Nature deficit:** Losing next generation of environmental stewards

### ➤ **Lack of transportation** is #1/#2 barrier to L.A. outdoor access

### ➤ **Need sustainable vehicle reduction:** 4 million forest visitors



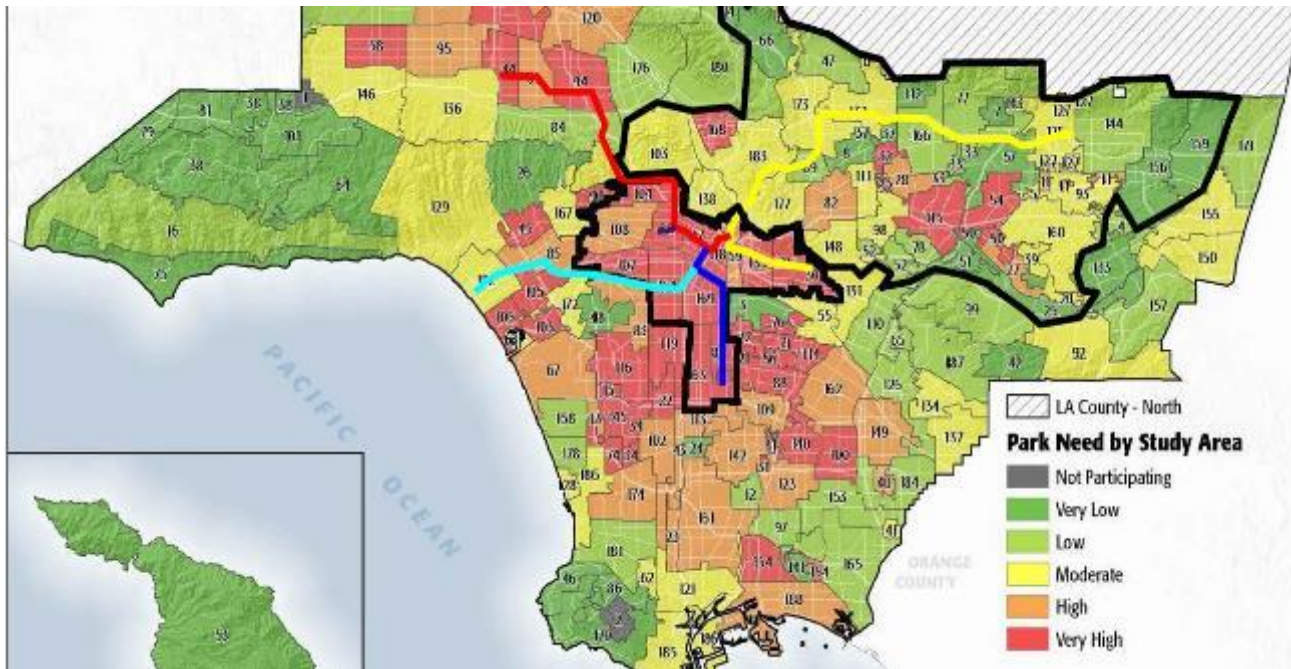




## Angeles National Forest San Gabriel Mountains National Monument

# The Opportunity: San Gabriel Mountains

- **Connect diverse families** to the Forest & National Monument
- **70% of LA County's open space**
- **1 in 20 Americans:** 17 million people within a 90-min. drive
- **Transit-to-Trails:** Connect the gap-public transit & public lands
- **Multi-benefits:** Climate action, improve air quality & congestion, support local business districts, grow eco-tourism





*Angeles National Forest  
San Gabriel Mountains National  
Monument*

## *Purpose of Core Planning Team*

1. Limited early funding phase must be strategic.
2. Engage in preliminary planning + advising to set up full proposed program for success.
3. Share critical expertise, planning knowledge to accelerate the effort & guide development of:
  - a. Framework, criteria to evaluate the opportunities
  - b. Larger stakeholder groups
4. Time/meeting expectations, data/consensus-driven

Governmental		
1st District, Los Angeles County Board of Supervisors	Martin Reyes	Transportation Deputy
5th District, Los Angeles County Board of Supervisors	Dave Perry	Transportation Deputy
Southern California Association of Governments (SCAG)	Javier Aguilar	Senior Regional Planner
San Gabriel Valley Council of Governments (SGVCOG)	Alexander Fung	Management Analyst
Transit		
Los Angeles County Metropolitan Transit Authority (Metro)		
Foothill Transit	Ritta Merza	Policy and Programs Manager
San Gabriel Mountains		
US Forest Service (USFS) - Angeles National Forest, San Gabriel Mountains National Monument	Ricardo Lopez Fabian Garcia	Forest Engineer Partnership Coordinator
San Gabriel & Lower Los Angeles Rivers & Mountains Conservancy (RMC)	Joe Gonzalez	Project Analyst II
Mountains Recreation & Conservation Authority (MRCA)	Brian Baldauf	Chief of Watershed Planning
San Gabriel Mountains Community Collaborative (SGMCC)	Daniel Rossman	Chair, Transportation Committee CA Deputy Director, The Wilderness Society
National Forest Foundation (NFF)	Dania Gutierrez	Southern California Program Manager
Funder		
Resources Legacy Fund	Alfredo Gonzalez	Director, Southern California
Advisor		
Modern Hiker	Casey Schreiner	Editor-in-Chief





## *Existing Los Angeles Transit-to-Trails*

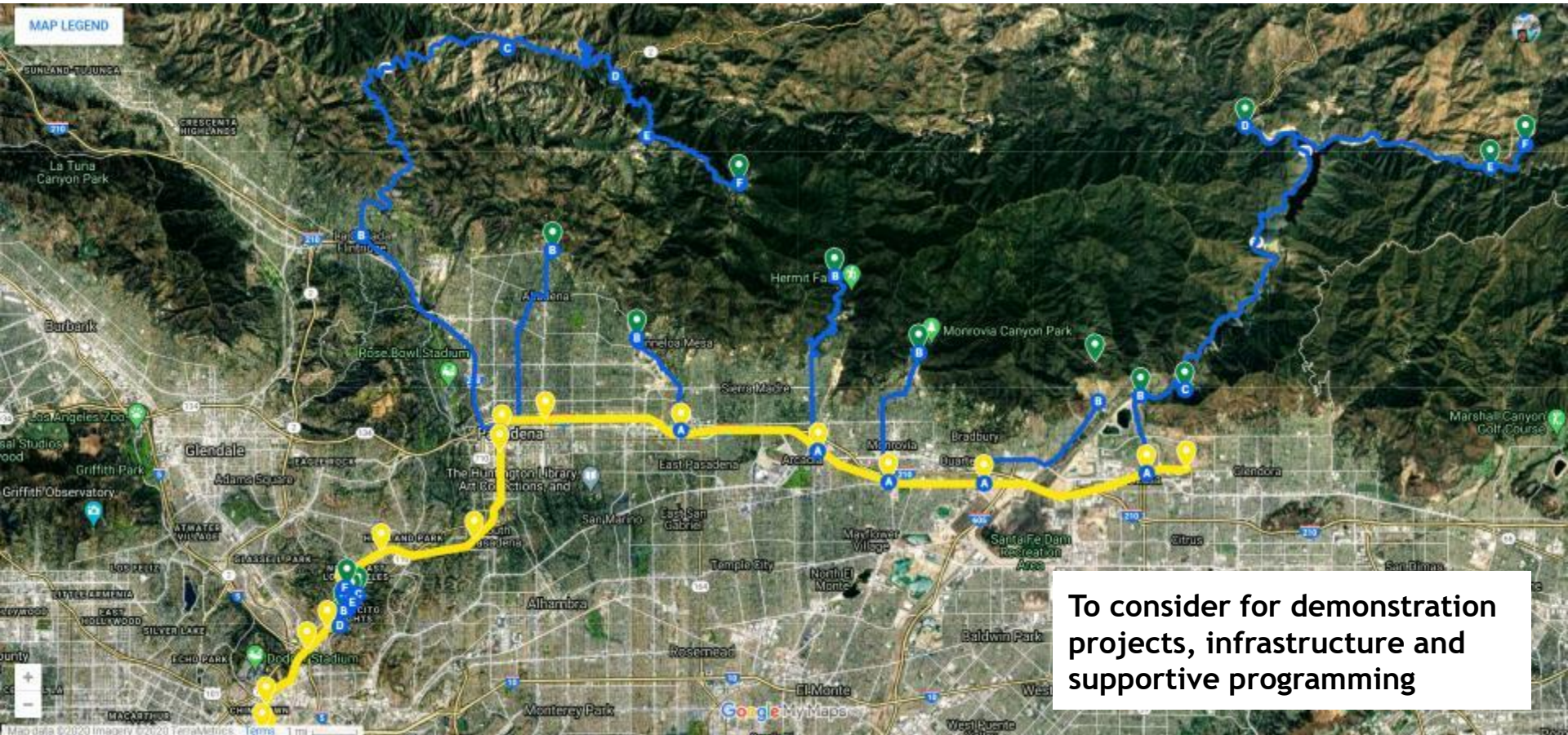


- **Griffith Observatory shuttle** (LADOT)
- **Griffith Parkline shuttle** (LADOT)
- **Baldwin Hills Parklands LINK shuttle** (LA County)
- **Beach Bus** (LA County)
- **Historical Mt. Lowe Railway to San Gabriel Mountains**



*Angeles National Forest  
San Gabriel Mountains National  
Monument*

## *8 Proposed Routes*







## *Proposed Routes*



**Shuttle:** Audubon Center at Debs Park  
**Departure:** GL Southwest Museum Station  
(Northeast LA)

- Key nearby urban natural area
- **Pedestrian path**
  - First-last mile connection
  - 15 min. walk
- **Circulator Shuttle**
  - Connect key cultural, historical sites: Lummis Home, Heritage Square, Southwest Museum

**Shuttle:** Mt. Wilson Express  
**Departure:** GL Memorial Park Station (Pasadena)

- 210 Fwy to Angeles Crest Hwy (2)
- Popular destinations:
  - Vista point
  - Switzer Falls Trail/Picnic Area
  - Haramokngna American Indian Cultural Center & Trailheads
  - Eaton Saddle Trailhead
  - Mt. Wilson Observatory
    - Tours, Cosmic Cafe, trailhead





## *Proposed Routes Cont.*



**Shuttle:** Eaton Canyon Bus Connector  
**Departure:** GL Sierra Madre Villa Station (East Pasadena)

- Leverage existing bus routes
  - Metro Bus 264
  - Pasadena Transit 32
- Improve branding, schedule, routes
- First/Last Mile pedestrian path

**Shuttle:** Monrovia

**Departure:** GL Monrovia

**Destination:** Monrovia Canyon Park

- Monrovia Falls
- Nature Center
- Picnic Area
- Historic Ben Overturff Trail

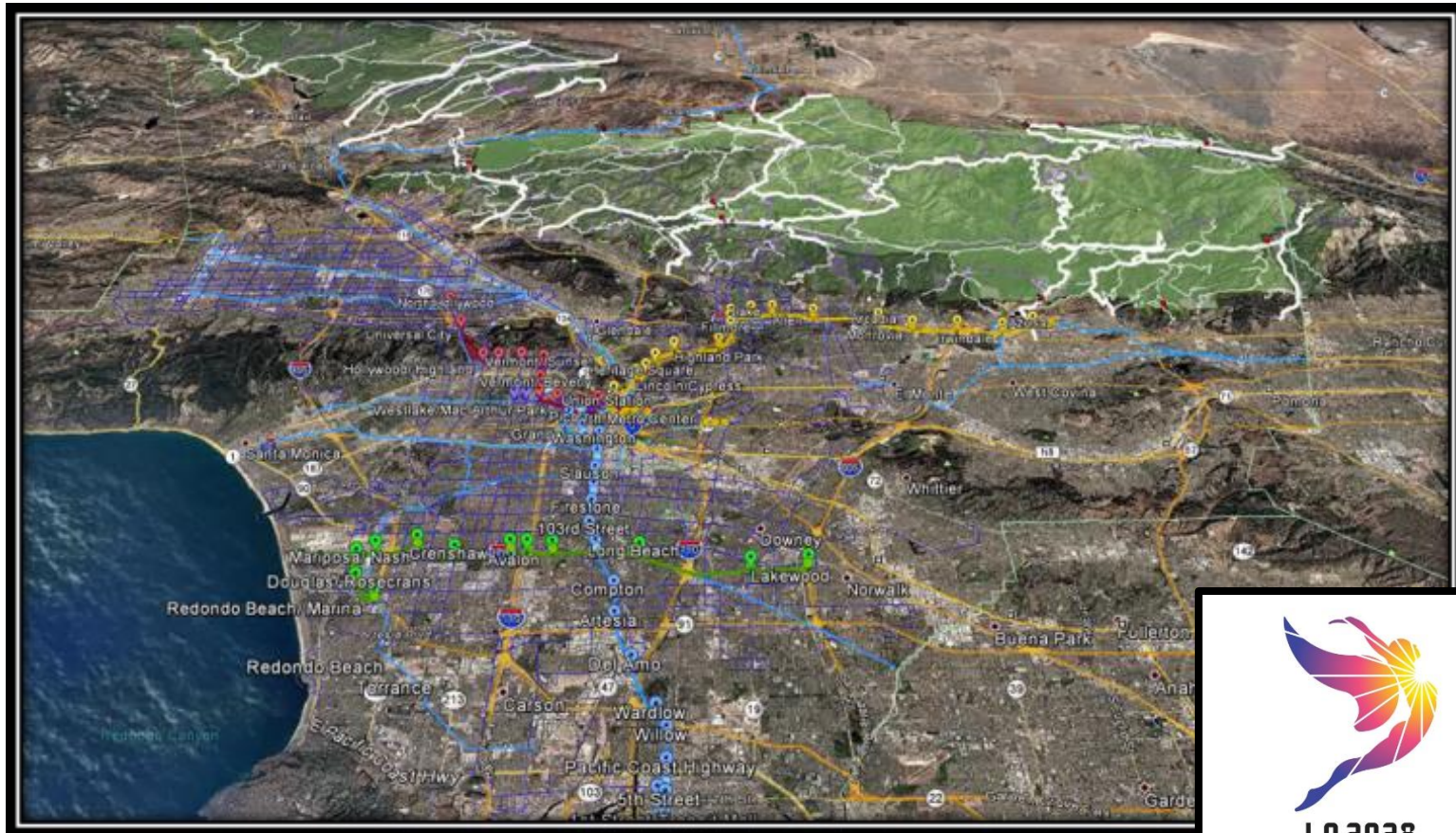






*Angeles National Forest  
San Gabriel Mountains National  
Monument*

## *Transit Opportunities into the Future*





# Angeles National Forest San Gabriel Mountains National Monument

## Future Opportunities







# Questions?

- **Angeles NF Homepage:**  
<https://www.fs.usda.gov/angeles/>
- **2019 Chantry Shuttle:**  
<https://www.youtube.com/watch?v=5aTFg5NUDio&feature=youtu.be>
- **Contact me:**  
Ricardo Lopez  
Forest Engineer  
[ricardo.lopez2@usda.gov](mailto:ricardo.lopez2@usda.gov)

